



The Oldest and Finest of Coeur D' Alene, Idaho... We Do It Right!

Back Country ATV Assn. Inc.
Of Coeur D' Alene, ID
Mailing Address:
595 Hayden, ID 83835
www.backcountryatv.org

EDITORIAL PROVIDED BY
GORDON INGRAHAM

August , 2012
Volume 12, Issue 7.

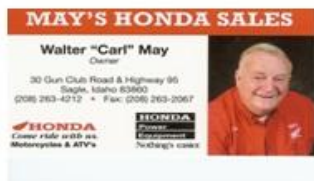
CONGRATULATIONS

ELIOT MOHR
FOR WINNING THE
50/50 DRAWING!!!

NEW MEMBER

ROBERT (DAVE) & AILEEN
ORR

WELCOME ABOARD



IN MEMORY OF CARL MAYS

Carl Mays passed away on July 21, 2012 from a long battle with cancer. He has been our club sponsor for many years. He owned May's Honda in Sagel. Carl brought his family to Sagel in the early 60's where he worked in the logging industry, he then worked for the USFS AND BLM building hiking trails until he injured his knee. In 1992 he purchased and established the Honda dealership renaming it May's Honda, where he sponsored several riders clubs and community events. Carl will be remembered for his love of life, family and his business.

HELLS CANYON RIDE

Harold Morris has been leading a ride in Hells Canyon for several years on Memorial Day week-end. It is a challenging ride but well worth taking. Harold said he will be leading this ride every year until he cannot ride any more. As soon as he gives the news letter editor more information we will post it.

CATALDO RIDE



Ken Chrisp led the Cataldo ride. We left the Bonco lot at 8:00 am. (Good thing) It was foggy in the am. But by afternoon it was clear. We had to make a detour



because the 209 was closed and then, Doug Lynch had his tie rod go out on his ATV. We tried to fix it so he could drive it, but that just was not going to happen. So someone come up with the idea that Dan Hutchins could tow him and guess what it worked. They winched the front up on the back of Dan's razor and away we went. They left Doug's ATV at the Cataldo Inn and he rode back with Dan. Doug picked up his ATV later that evening and all's well. If you get into Cataldo, the food and service at the Cataldo Inn is fantastic!



Mount Baldy Ride

The ride was led by Steve Hesselink with PRA. He did a fantastic job. As always the views from Mt. Baldy are amazing. We were able to play in some snow and the ride was challenging in some areas. The back side of Schweitzer still had a lot of snow on it but it was a beautiful day. Thanks a lot Steve, for the fantastic ride.





RATHDRUM DAYS PARADE

For those of you that did not ride in the Parade, you missed out on a lot of fun. I wish more of you would bring your children or grand children to ride with us in the Parade. My grand children love it, they really get a kick out of throwing candy. Gordon and Eliot led carrying the US and Idaho State flags. Ken followed with his trailer and grand children and the rest of the ATV's followed him. Dan and Karen trailed in their Razor throwing candy also.



IDAHO (May 12, 2011) during the 2011 legislative session, the Idaho Recreation Council worked with legislators to pass SB1001. The passing of this bill brought a couple of key changes to Off-Highway Vehicle (OHV) education requirements in Idaho.

How does this impact you? All unlicensed riders who wish to operate an OHV on National Forest roads are required to take an OHV safety course. All riders age 15 and under who wish to operate an OHV on roads must be supervised. The definition of supervision was clarified to mean that if you are riding on any road with your child you must be in a position to provide close support, assistance or direction. If you are not riding with your child you must be within 300 ft when supervising their operation on any road. You must be in a position to provide close support, assistance or direction.

Learn more: Helpful links and answers to frequently asked questions are available here:

<http://parksandrecreation.idaho.gov/recreation/mandatoryeducation.aspx>

To obtain additional information on OHV classes near you, visit:

www.parksandrecreation.idaho.gov or email ohveducation@idpr.idaho.gov

CLUB MEMBERS REMEMBER

THIS IS YOUR NEWSLETTER. IF YOU HAVE ANYTHING YOU WOULD LIKE TO CONTRIBUTE TO THE NEWSLETTER PLEASE CONTACT GORDON INGRHAM AT 208 -712 -3068

For sale

1. **Dust Masks:** I have many color and designs available. They are adjustable to fit and work great in the cold, pollen and dust. Machine washable. \$12 each. Call Bert at 208.683.0526
2. We now have flags for sale.—They are \$10.00 ea. Frank will have them at the meetings or call 208-687-1362.
3. Ken Chrisp has flag poles. Call him at 509-473-9032.
4. We now have all the logos in our possession. If you want some Call Frank at 208-687-1362. You can still have them put on at Rathdrum Drug.
5. **For your Information:** Rathdrum Drugs now have in stock various colors of long sleeve T-shirts. They also carry short sleeve T-shirts with a front pocket. If you would like one, ask at the drugstore and she will put a logo on it for you. These shirts are hard to find.
6. **Black and Chrome license plate frames.** \$12.50 ea. See Gordon at 208-712-3068.

2012 SCHEDULE

ALL RIDES ARE SUBJECT TO CHANGE

It would be great if everyone wore helmets this year, and if you happen to have a radio... bring it along too. I am sure there is going to be more road riding this year thanks to our Forest Service



SUGGESTED RIDING SKILL LEVEL

- EASY** – Beginning rider skills, mostly flat trails, no side hills, stay on designated trails
- INTERMEDIATE** – Experienced riding skills RECOMMENDED, roads/ trails, possibly some steep slopes, side hills or loose rocks
- COMBINATION** – Combination of difficulties, various terrains. For example intermediate to difficult abilities
- DIFFICULT** – Experienced riding skills REQUIRED, trails requiring 4WD, obstacle navigation, rocky, side hills and slower travel

HARRISON RIDE, SATURDAY, AUGUST 4TH, 9:00am (EASY)

Leave the 4th of July parking lot at. Take Exit 28. Go to stop sign, turn left, cross the Hwy, and turn right at stop sign. Lunch in Harrison, or bring it. Might want to bring gas. Approx 70 miles round trip

EVERY RIDE, SUNDAY, AUGUST 12TH 8:00 am (EASY)

Leave from Wallace parking lot AT 8:30am, Exit at 61; go to the stop sign at bottom of off ramp. Turn right, and then cross the street into the big dirt parking lot on your left. Lunch in Avery or bring your own. Bring gas. Approx 80 miles round trip.

CLARK FORK TO SCOTCHMANS PEAK PARKING AREA SAT AUG 18TH 9:AM (EASY)

Park at the Clark Fork High School Parking lot on Hwy 200 in Clark Fork. This is a easy ride up to the parking area for the Scotchmans Peak Trail Head. Will have time to walk up a little ways on the trail during lunch time, so bring you lunch with you.

DISMAL LAKE RIDE SATURDAY, AUGUST, 25TH, 8:00 am. (EASY).

CANCELLED

Ride to a small lake south of Avery, All roads. Beginner and UTV ok, just remember 145 miles is a long day. Bring lunch and extra gas unless you can make it 115 miles to gas at Avery

THERE WILL BE A RIDE TO TROUT CREEK MONTANA IN PLACE OF THEM, MORE INFORMATION WILL BE SENT OUT SOON received from Grodon.

CHAMPION CREEK, SUNDAY AUGUST, 26TH, 9:00 am (DIFFICULT).

CANCELLED

Suggested 4 WD. This is a challenging and technical ride into the mountains of Idaho and Montana. Lunch at the Montana Bar and Grill in Saltese. Gas available at Saltese or bring your own. 90 miles.

SEPT. 1 and 2 OPEN

EARLS RIDE SUNDAY, SEPTEMBER, 9TH 9:00 am. (INTERMEDIATE)

Earls ride leaving from Wallace parking lot at 9:00am. Guaranteed to be a great ride. There will be Lunch available in Murray or bring own.

CLARK FORK, SUNDAY, SEPTEMBER, 16TH, 8:00 am (EASY)

Leaving from Bunco Parking lot at 8 am. Early time is due to longer distance, approx 110 miles. Bring lunch and extra gas, or get both in Clark Fork.

SILVER DOLLAR BAR RIDE, SATURDAY, SEPTEMBER 29TH, 8:00 am (EASY)

Leave from the Wallace parking lot at 8:00am. Exit at 61 go to the stop sign at bottom of off ramp. Turn right, and then cross the street into the big dirt parking lot on your left. UTV friendly. Lunch at the Silver Dollar Bar, or bring your own. Gas available at the Bar, or bring gas if you think that you might need it on the way. Approximately 110 miles round trip.

BUSINESS MEMBERS

ACE HARDWARE:

1217 N. 4th St. ~ CDA ~ 773-1581
1604 E. Seltice Way ~ Post Falls ~ 773-1581

ALLSPORT POLARIS HONDA:

E. 19505 E. Broadway Ave ~ Liberty Lake, WA ~
509-962-5044

CDA POLARIS:

6040 E. Seltice Way ~ CDA ~ 664-3601

EMPIRE CYCLE AND POWER SPORT:

7807 E Sprague ~ Spokane, WA ~ 509-892-6368

ENAVILLE RESORT (SNAKE PIT):

1480 CDA River Rd. ~ Kingston ~ 682-3453

FARMERS INSURANCE OF HAYDEN:

157 Hayden Ave. ~ Hayden ~ 772-6058

HELMET OUTLET USA.COM:

5648 N. Govt. Way ~ Dalton Gardens ~ 762-3668

IHOP:

2301 N. 4th Street ~ CDA ~ 667-9600

INTERMOUNTAIN SECURITY :

14375 Rockwood Ct. ~ Rathdrum ~ 667-4915

LIFETIME ROOFING AND SIDING:

314 N. Division ~ Kellogg ~ 784-1363

MAYS HONDA:

30 Gun Club Rd ~ Sagle ~ 263-4212

MIKES POWER SPORT:

10625 E. Sprague ~ Spokane Valley, WA ~ 509-891-4300

MR. TIRE:

PO Box 276 ~ Athol ~ 683-2195

Officers / Board Members

PRESIDENT	Gordon Ingraham 509-844-8133 gingraham@roadrunner.com	DIRECTORS:	Jim Bennett 765-1014 Eaglejim00@yahoo.com
VICE PRESIDENT	Eliot Mohr 509-220-4166 Mohr-co@cet.com		Gary Strickland 208-772-1993 idbuffalo@aol.com
SECRETARY:	Kathy Chrisp 509-473-9032 kmchrisp@comcast.net		Joe Saffeels 206-200-7372 Jsaffeels1@roadrunner.com
TREASURER:	Frank Traver 208-687-1362 ftraver@roadrunner.com		Dan Hutchins 509-483-6625 hutchbd2@msn.com
WEBMASTER:	Myrna Rasmussen iDESIGN, LLC		Ken Chrisp 509-473-9032 klchrisp@concast.net